



COMMISSION FANTASY PAINTERS TUTORIALS

PLAGUEBURST CRAWLER



Paints

Available from Citadel:

Base- Death Korpse Drab
Base- Death Guard Green
Base- Balthasar Gold
Base- Rakarth Flesh
Base- Tausept Ochre
Layer- Ushabti Bone
Shade- Druchii Violet
Shade- Athonian Camoshade
Shade- Reikland Fleshshade
Shade- Agrax Earthshade
Technical- Lahmian Medium
Technical- Nurgle's Rot
Technical- Nihilakh Oxide

Available from Vallejo:

Metallic Air- Gunmetal



Materials

-Paint brushes:

We recommend Windsor & Newtons Series 7 (sizes 0, 00 and 2)



-Airbrush

We use Harder en Steenback-Evolution airbrush, Airbrush Thinner and Airbrush Flow Improver from Vallejo



-Weathering pencils

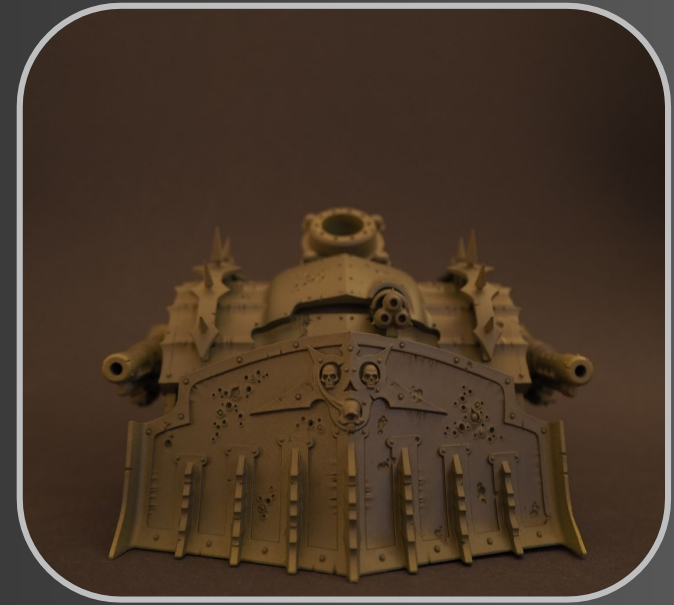
We use set AK10041 from AK



Step 1.

Use an airbrush to spray the whole miniature with 'Death Korps Drab from Citadel'.

To get a smooth and even application of paint using your airbrush, add some airbrush thinner and flow improver to the paint before spraying.



Step 2.

Use an airbrush to spray on the highlights of the miniature, including over the crater details, with some 'Death Guard Green'.

Once again, use some airbrush thinner and flow improver to help create a smoother application of paint.



Step 3.

Make a 1:1 mix of Lahmian Medium and Athonian Camoshade. Using a medium (size 00) brush and paint the whole of the miniature.

Allow the miniature to fully dry before proceeding to the next step. This may take upto a hour.



Step 4.

Using Gunmetal shade paint and a medium brush (size 00), paint all the metal and gun parts on the miniature. Alternatively, an airbrush may be used in place of a medium brush.

Some parts may require a second coat for improved paint coverage.



Step 5.

To create detail and definition, use Balthasar Gold over selected metal and brass parts of the miniature using a medium brush (size 00).

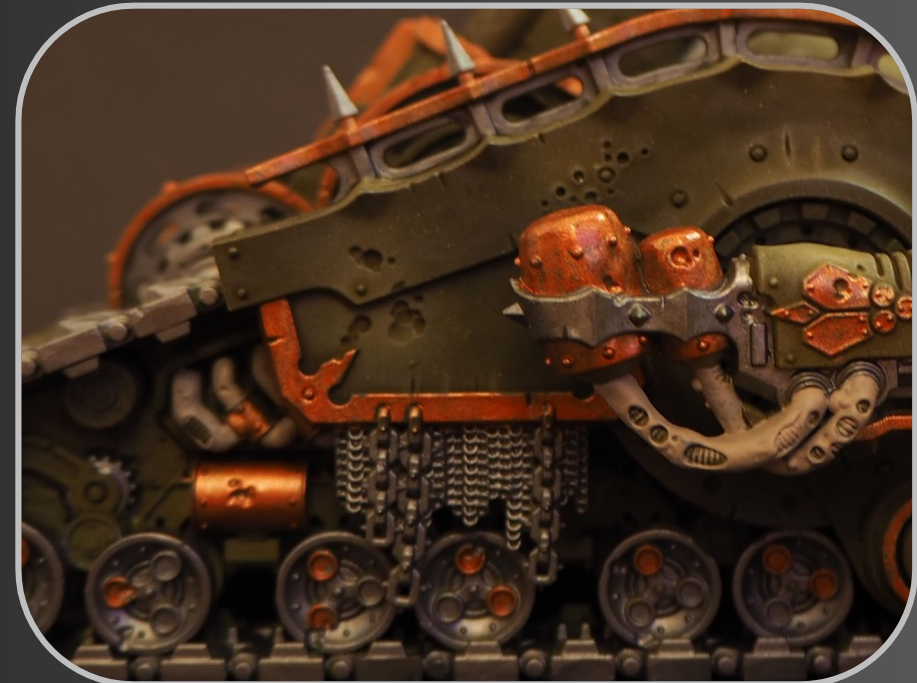
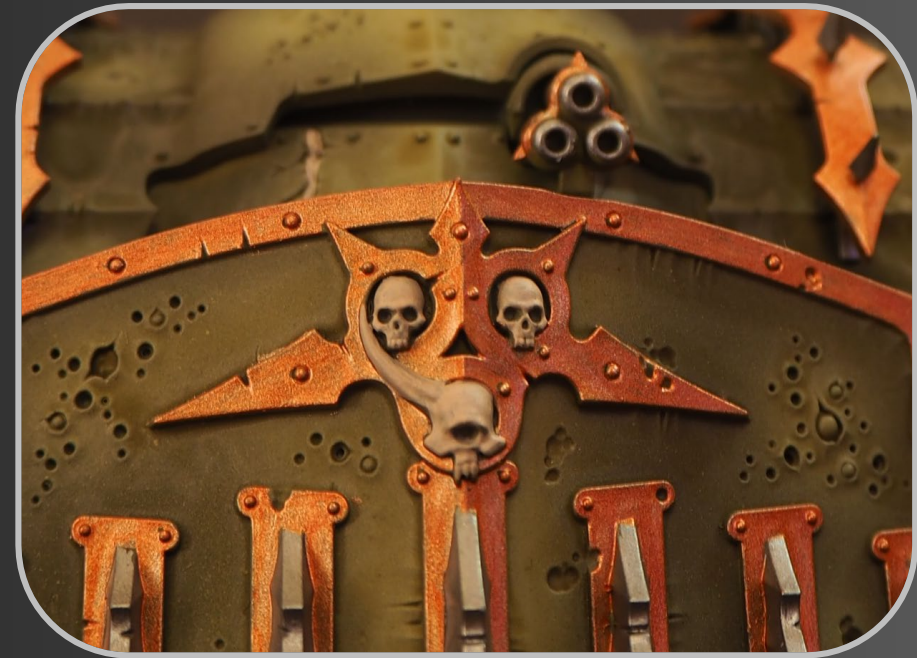
Some parts may require a second coat for improved paint coverage.



Step 6.

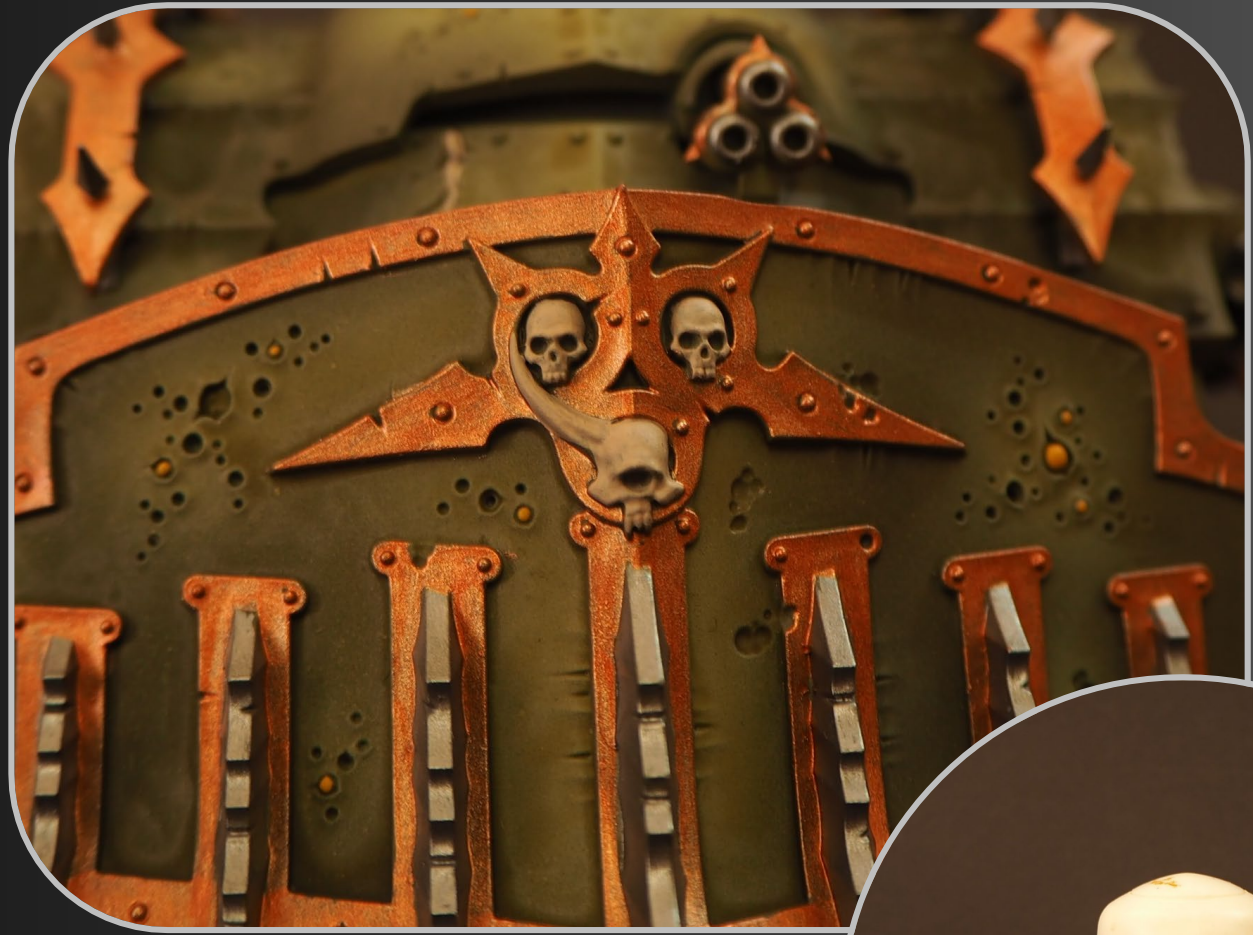
For the skull and flesh pipe details, use 'Rakarth Flesh' as a base colour and apply using a small brush (size 0).

Applying the paint twice in this layers provides a better finish.



Step 7.

Using a small brush (size 0) and Tausept Ochre paint, paint the puss-like details (found within the craters) of the miniature.



Step 8.

Make a 1:1 mix of Lahmian Medium and Agrax Earthshade. Using a medium brush (size 00) cover the metal parts with the shade mix. This creates depth and a more realistic worn tone to the miniature.

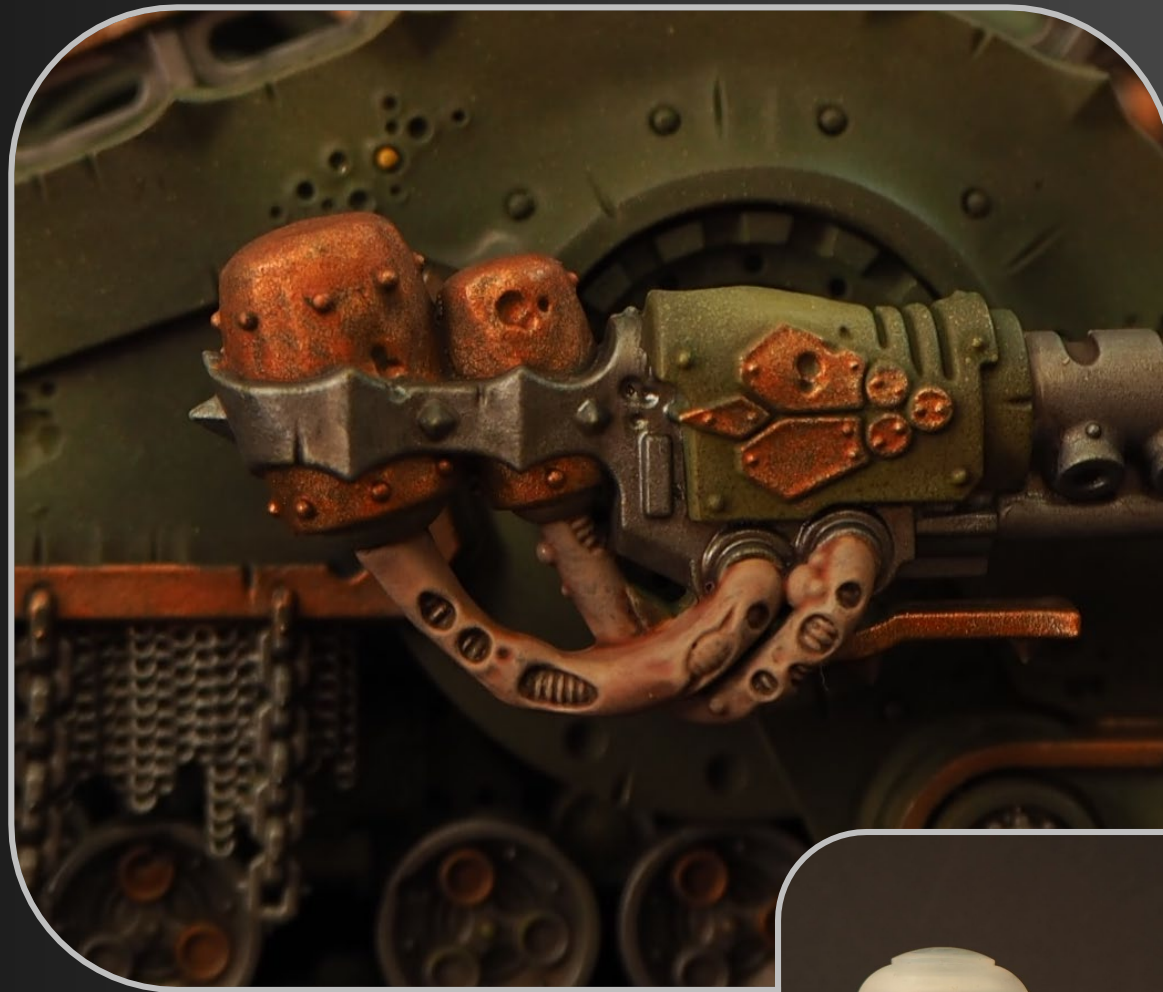
To increase the effect, apply a second coat.



Step 9.

Make a 1:1:1 mix of Lahmian Medium, Reikland Fleshshade and Druchii Violet. Using a medium brush (size 00), apply the paint mix to the flesh parts in a thin layer.

Allow the paint mix to dry completely before applying a second coat.



Step 10.

For the skulls, mix 1:1 Rakarth Flesh and Ushabti Bone paints. Apply a thin layer using a small brush (size 0). Once dried, apply a second coat.

Once dried, apply a thin layer of Ushabti Bone to the raised areas of the skulls using a small brush (size 0).



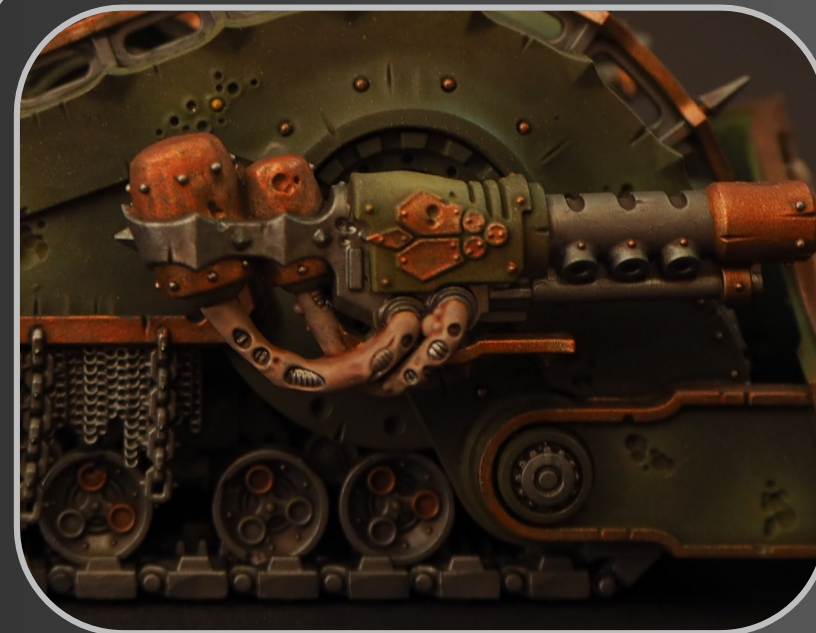
Step 11.

For additional details:

Using a small brush (size 0)
apply Gunmetal paint to the
nails on the brass and flesh
coloured areas

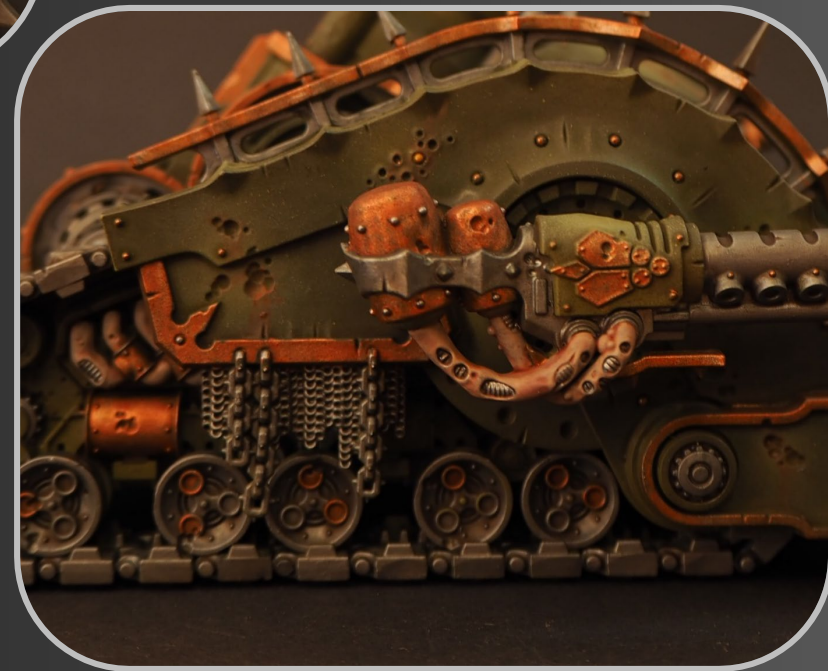
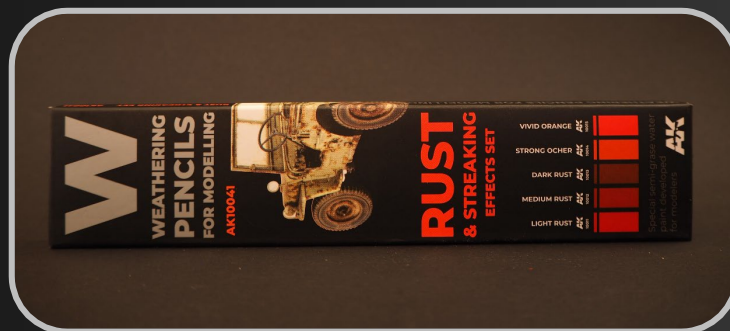
Using a small brush (size 0)
apply Balthasar Gold paint to the
nails on the Green parts.

Using a small brush (size 0)
apply Nurgle's Rot paint to the
puss parts.



Step 12.

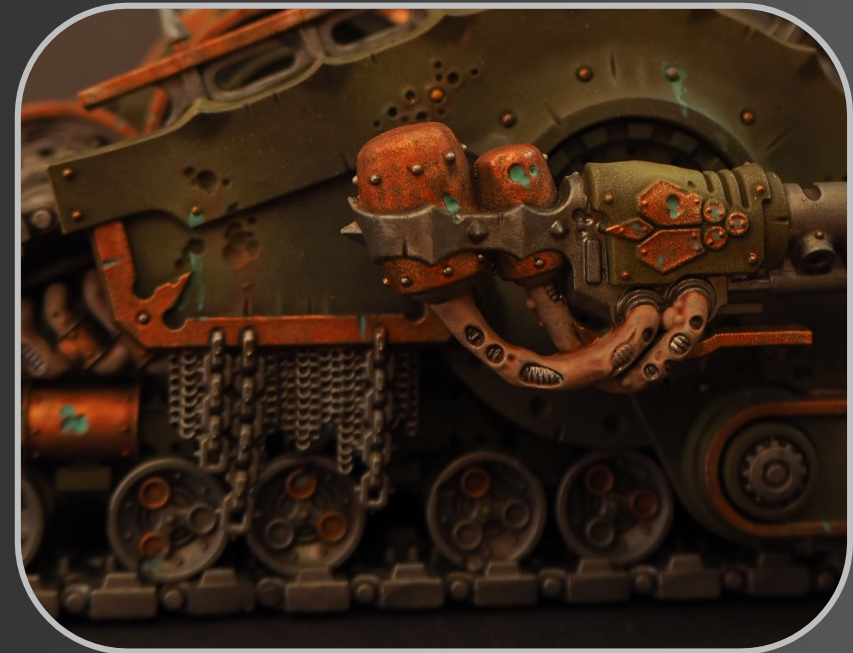
To create a rusty metal effect, use Weathering pencils to create stripes stretching down from the craters. Using a small brush (size 0) and some water, smudge the stripes to create the rusty effect.



Step 13.

Finally, use Nihilakh Oxide on the cracks/broken areas of the brass parts and some nails to create an oxidized metal effect.

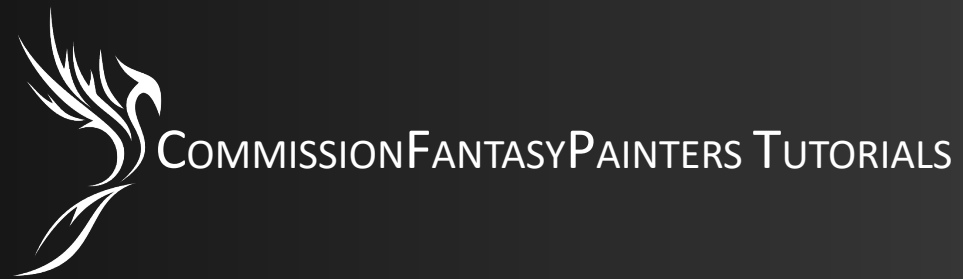
Do not apply to much, less is more!



Happy Painting



COMMISSION FANTASY PAINTERS TUTORIALS



For more tutorials, painted miniatures or other info about Commission Fantasy Painters go to:

<https://www.commissionfantasypainters.com/>

<https://www.facebook.com/CommissionFantasyPainters>

<https://www.instagram.com/commissionfantasypainters>